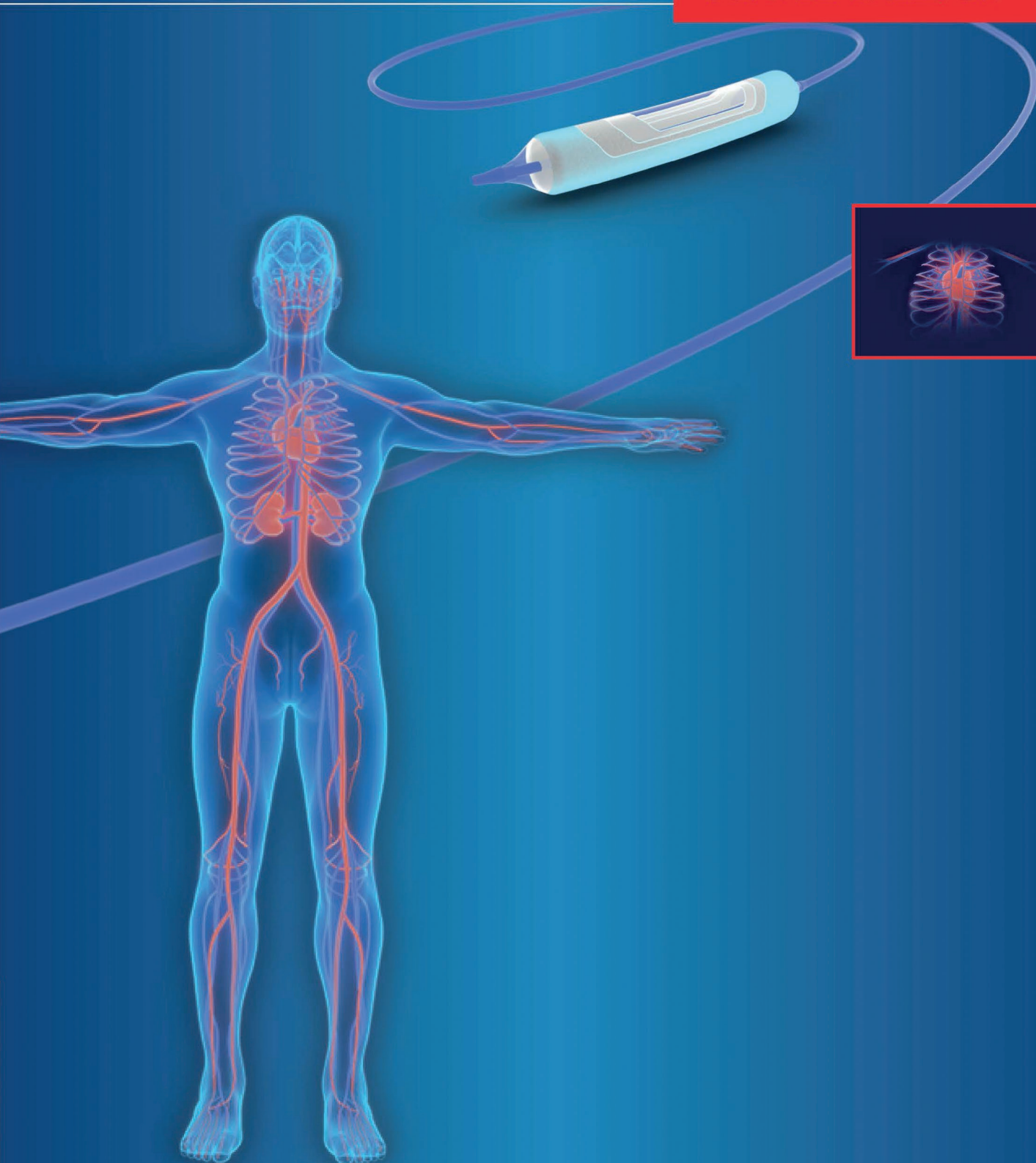


# ELUTAX "3"

THE INTELLIGENT DRUG  
COATED BALLOON



CORONARY

THE DRUG COATING BALLOON COMPANY

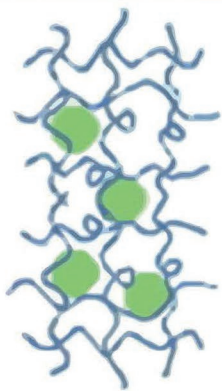


AR Baltic Medical

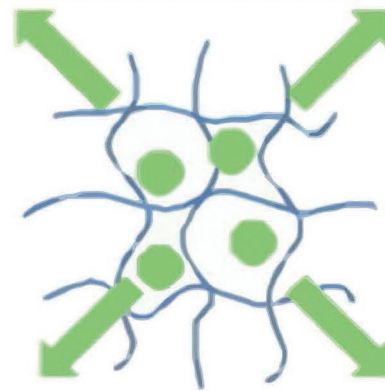
# SUSTAINED VALUE

## PRINCIPLE OF DRUG MAINTENANCE IN THE VESSEL WALL

### Mechanism of Hydrogel



**Paclitaxel** trapped in DEXTRAN structure.  
In this configuration the Drug is coated onto the balloon surface and pressed against the inner lumen of the vessel after inflation.



**Paclitaxel** Long-term diffusion out of DEXTRAN from the inner lumen into the vessel wall.

The special coating structure enables effective drug tissue levels up-to 60 days after intervention.



# TECHNOLOGY BACKGROUND

**Balloon platform:** Catheter produced in house

**Sizes:** length from 1 cm to 25 cm, diameter from 1,5 to 14 mm

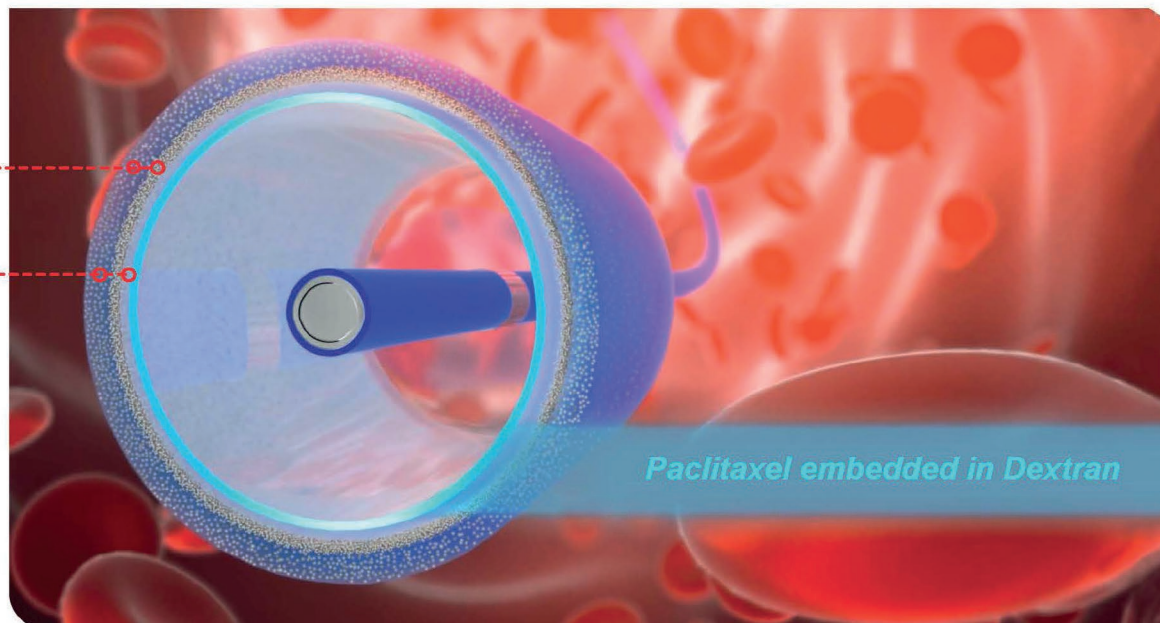
High flexible balloon catheter with low profile due to our Vortex Technology.

## Multi Purpose Drug Matrix

- Homogenous coating
- Even and Consistent coating of inflated Balloons
- Drug Matrix (3 Dimensional Dextran – Paclitaxel Formation)
- Balloon with 360 Degree coating coverage
- Minimal Drug lost during passage in the body
- Minimal Drug lost from the balloon surface during maneuver or inflation
- Reliable quantitative Drug deposition into the vessel wall
- Target deposition Modus TDM - Drug is only released at higher pressure and contact the vessel wall
- Long Lasting EFFECT -Drug concentration in the vessel wall (intima, media, adventitia) for several weeks
- No Drug “Chunk” spreading - during inflation

Paclitaxel  
Microcrystals

Dextran Gel





# DRUG MATRIX PACLITAXEL+DEXTRAN



Multifunctional Coating  
Dedicated: Dextran-Paclitaxel Formation

1. Seals the drug at the vessel
2. Therapeutic action time is longer

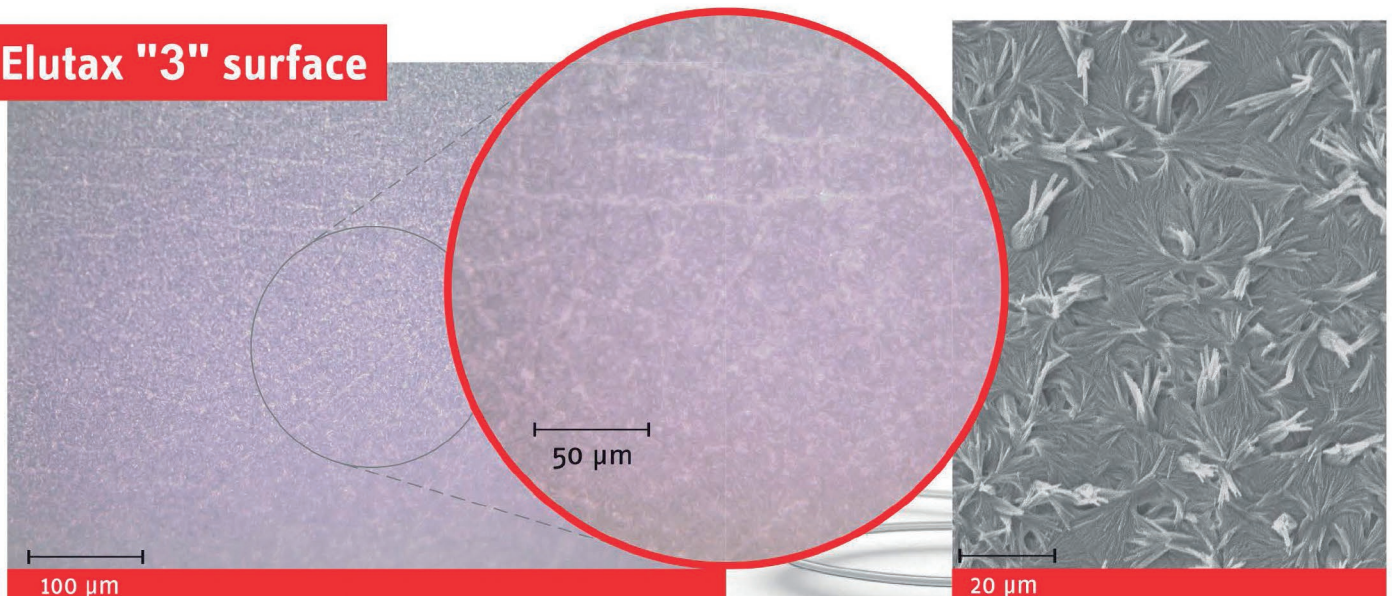
- + Better mechanical stability
- + Anti thrombogenic
- + Lesion protection
- + Reservoir Matrix
- + Local stability
- + Lowest wash off after deposition

“CONTROLLED HEALING OVER MONTHS”

## Paclitaxel Tissue levels of different Drug eluting Balloons over 30 days

Coronary PORCINE	Elutax "3"	Competitor A	Competitor B
uniform coating	yes	no	no
360 degree	yes	no	no
Drug Dose 1 hour	~ 250 $\mu\text{mol/ml}$	~ 200 $\mu\text{mol/ml}$	~ 200 $\mu\text{mol/ml}$
Drug Dose 7 days	~ 70 $\mu\text{mol/ml}$	~ 0 $\mu\text{mol/ml}$	~ 10 $\mu\text{mol/ml}$
Drug Dose 30 days	~5-10 $\mu\text{mol/ml}$	~0 $\mu\text{mol/ml}$	~0,1 $\mu\text{mol/ml}$
Drug lost during maneuver	max 5%	high	up to 30% every 10 sec.

## Elutax "3" surface





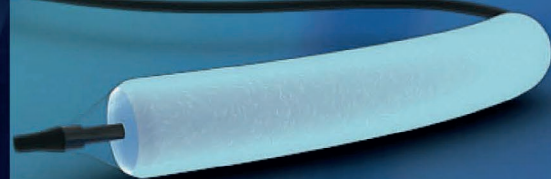
# ELUTAX "3"

## CORONARY

### THE DRUG ELUTING BALLOON TO REACH COMPLEX LESIONS

#### CORONARY RX

<b>Purpose:</b>	coronary
<b>Lesion location:</b>	coronary
<b>Tip:</b>	flexible, soft, 0,017"
<b>MAX Catheter profile:</b>	less than 1,0 mm
<b>Catheter design:</b>	RX
<b>Catheter material:</b>	Nylon
<b>Usable catheter length:</b>	Minimum 135 cm
<b>GW length:</b>	Recommended > 180 cm
<b>Max. recommended GW:</b>	0,014"
<b>Introducer sheath compatibility:</b>	4 F
<b>Guiding catheter compatibility:</b>	Minimum 5F
<b>Balloon characteristic:</b>	semi compliant
<b>Balloon nominal diameter:</b>	1,5-4,0 mm
<b>Balloon nominal length:</b>	10-40 mm
<b>Balloon coating:</b>	3D-Dextran-Paclitaxel Matrix
<b>Nr. of folds:</b>	3
<b>Crossing profile:</b>	less than 1 mm
<b>Inflation time minimal:</b>	10 sec
<b>Inflation time recommended:</b>	30 sec
<b>Nominal pressure:</b>	6 atm
<b>RBP:</b>	14 atm
<b>Need of predilatation:</b>	NO



The Dextran excipient enables a prolonged and more efficient drug uptake.

#### CORONARY RX

length							
mm	10	13	15	20	25	30	40
<b>1.50</b>	10150	13150	15150	20150	25150	30150	
<b>2.00</b>	10200	13200	15200	20200	25200	30200	40200
<b>2.25</b>	10225	13225	15225	20225	25225	30225	
<b>2.50</b>	10250	13250	15250	20250	25250	30250	40250
<b>2.75</b>	10275	13275	15275	20275	25275	30275	
<b>3.00</b>	10300	13300	15300	20300	25300	30300	40300
<b>3.50</b>	10350	13350	15350	20350	25350	30350	40350
<b>4.00</b>	10400	13400	15400	20400	25400	30400	40400

diameter

ORDER-CODE: ELUTAX "3"- RX-C-XXXX



## AR Baltic Medical

AR Baltic Medical UAB  
P.Luksio g. 5B  
LT-08221 Vilnius  
Lithuania  
Hotline  
24/7/365  
**+33 6 21273746**

<http://www.arbalticmedical.com/>



Rua Brasílio Cuman, 566  
São Braz – CEP 82315-010  
Curitiba – PR – Brasil

Fone/Fax: + 55 (41) 3233-7887

[www.tecmedic.com.br](http://www.tecmedic.com.br)

RMS 80202910109