

# Occlutech ASD Occluder

## Ordering information



Article No.	Ø Waist [mm]	Defect Size [mm]	Sheath Size* [F]	Flex Pusher II Article No. (colour**)
29ASD04	4	D≤4	7	51FP060 ●
29ASD05	5	4<D≤5	7	51FP060 ●
29ASD06	6	5<D≤6	7	51FP100 ●
29ASD07	7.5	6<D≤7.5	7	51FP100 ●
29ASD09	9	7.5<D≤9	7	51FP100 ●
29ASD10	10.5	9<D≤10.5	7	51FP100 ●
29ASD12	12	10.5<D≤12	9	51FP120 ●
29ASD13	13.5	12<D≤13.5	9	51FP120 ●
29ASD15	15	12<D≤15	9	51FP120 ●
29ASD16	16.5	15<D≤16.5	9	51FP120 ●
29ASD18	18	15<D≤18	9	51FP120 ●
29ASD19	19.5	16.5<D≤19.5	10	51FP120 ●
29ASD21	21	18<D≤21	11	51FP150 ●
29ASD24	24	21<D≤24	11	51FP150 ●
29ASD27	27	24<D≤27	12	51FP160 ●
29ASD30	30	27<D≤30	12	51FP160 ●
29ASD33	33	30<D≤33	12	51FP160 ●
29ASD36	36	33<D≤36	12	51FP160 ●
29ASD39	39	36<D≤39	12	51FP160 ●
29ASD40	40	39<D≤40	12	51FP160 ●

Availability subject to regulatory approval. Product data may be subject to change. Contact your Occlutech representative for information.

\* Occlutech Delivery Set (ODS). \*\* Colour defines Pusher colour.

**Quality made in Europe**

Occlutech adheres to the highest quality standards. We never compromise on quality. Our dedication to patients and the medical community is the main driver of our vision. We want to be in the forefront of developing technologies and products that matter, that make a difference and that will help our customers to be at the forefront when it comes to better treating structural heart disease.

**Content references:**

1. Optimal septum alignment of the Figulla Flex occluder to the atrial septum in patients with secundum atrial septal defects.
2. Castleman LS et. al. Biocompatibility of Nitinol Alloy as an Implant Material. *Journal of Biomedical Materials Research* | 97 6;10:695.
3. Electrochemical Characterization of Nitinol Occluder, Natural and Medical Sciences Institute at the University of Tübingen, mNI<0.014 µg/(cm²·d).
4. Early single clinical experience with the new Figulla ASD Occluder for transcatheter closure of atrial septal defect in adults.
5. Haas NA et.al. Closure of Secundum Atrial Septal Defects by Using the Occlutech Occluder Devices in More Than 1300 Patients: The IRFACODE Project: A Retrospective Case Series.
6. Comparison of the Occlutech ® Figulla ® septal occluder and Amplatzer ® septal occluder for atrial septal defect device closure.

**Customer Service International**  
 Occlutech, La Cours Gata 2, SE-252 31 Helsingborg, Sweden  
 Tel +46 (0)704 33 65 32, Fax +46 (0)42 311 09 70  
 order@occlutech.com, [www.occlutech.com](http://www.occlutech.com)



# Perfecting Performance



## Occlutech ASD Occluder



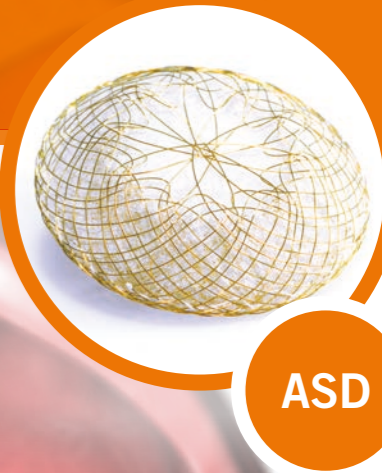
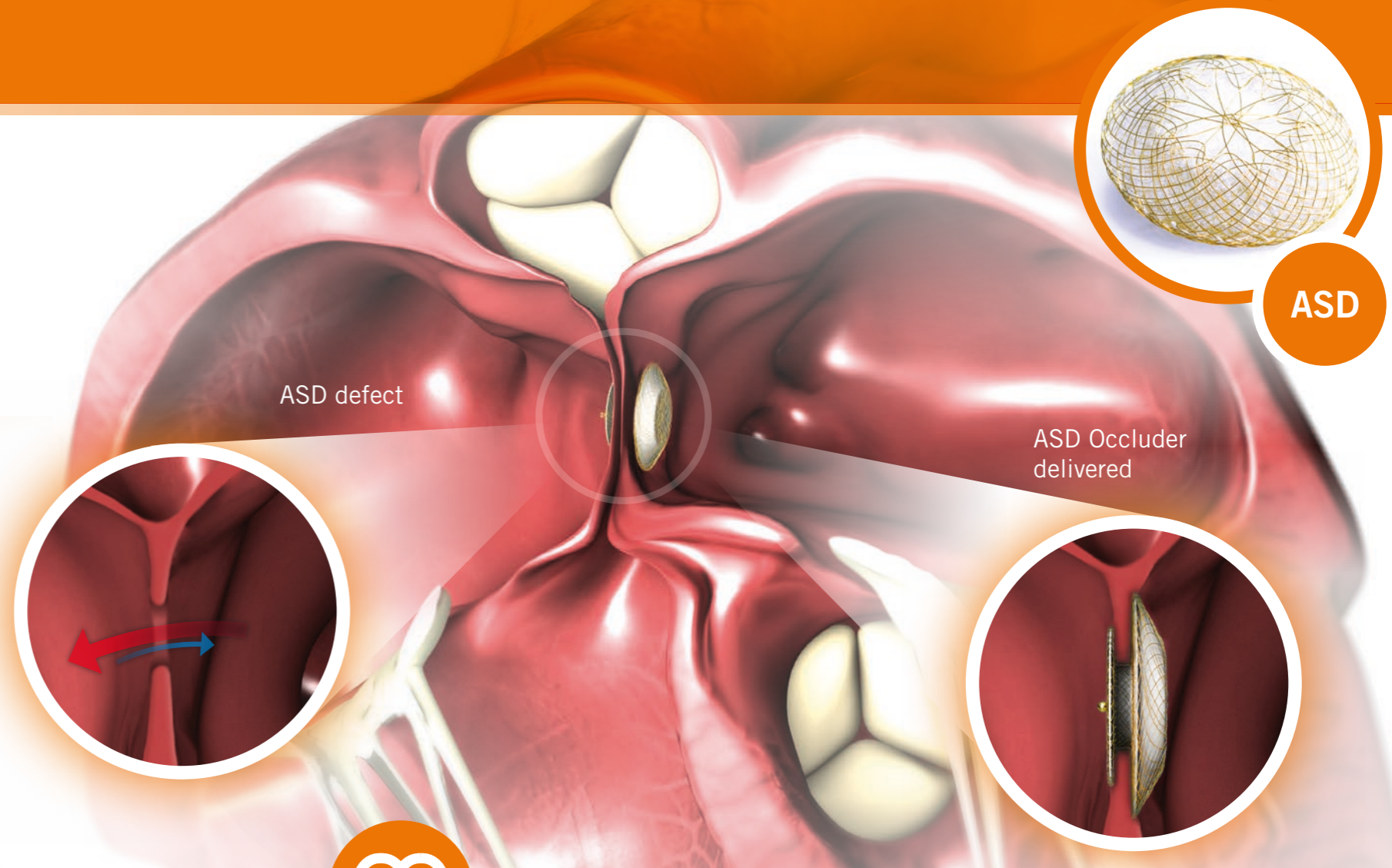
# Designed for excellence and safety



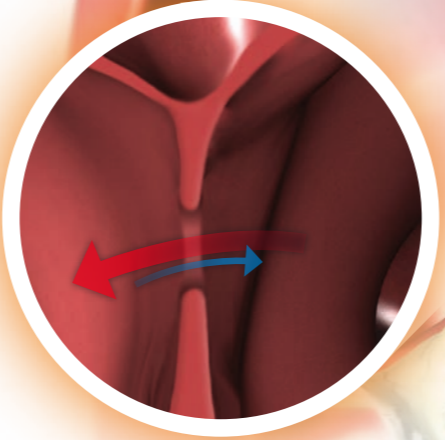
**PRODUCT FEATURES**

The design of the Flex II ASD Occluder results in an ideal septum alignment which increases its feasibility as well as patient safety during implantation<sup>1</sup>

- Optimized braiding pattern and less material at left atrial disc.
- Titanium oxide covered Nitinol shows the best values of biocompatibility<sup>2</sup> and minimum Nickel release.<sup>3</sup>
- Spunbonded PET-patch allows for fast endothelialization.
- The unique ball-connection between pusher and Occluder safely locks it, while it freely follows the anatomy. Once in place it is easy and fast to deliver.



ASD

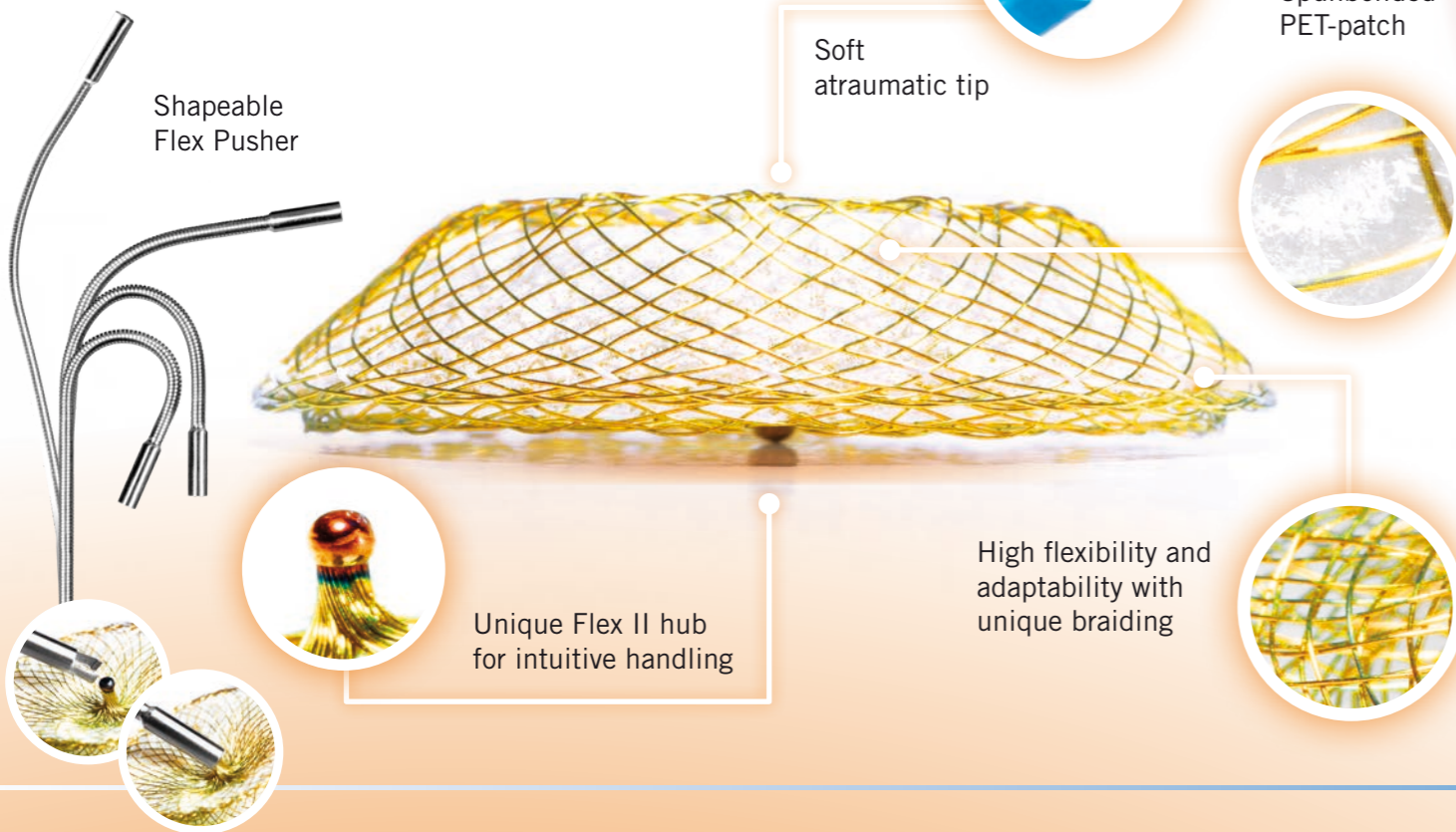


ASD defect



ASD Occluder delivered

Excellent material and design characteristics



Soft atraumatic tip



Spunbonded PET-patch



High flexibility and adaptability with unique braiding



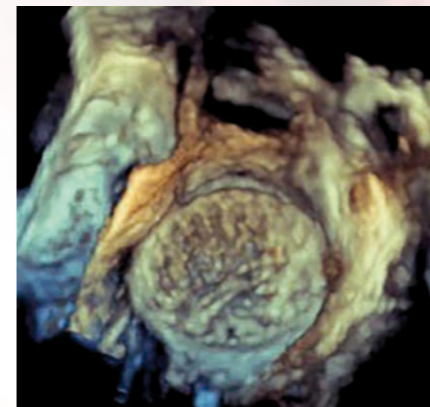
Unique Flex II hub for intuitive handling



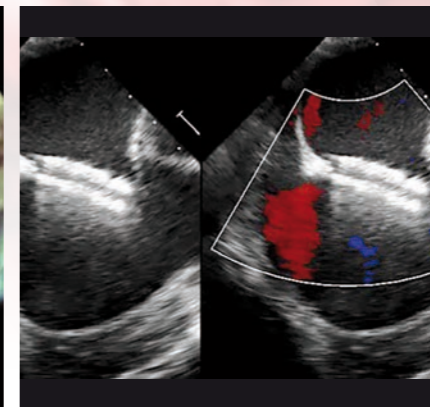
**CLINICAL BENEFITS**

Recent studies found that transcatheter closure of isolated secundum atrial septal defects using the novel design of the Occlutech ASD Occluder was safe, effective and had an excellent outcome during the 6 months follow-up period<sup>4,5</sup>

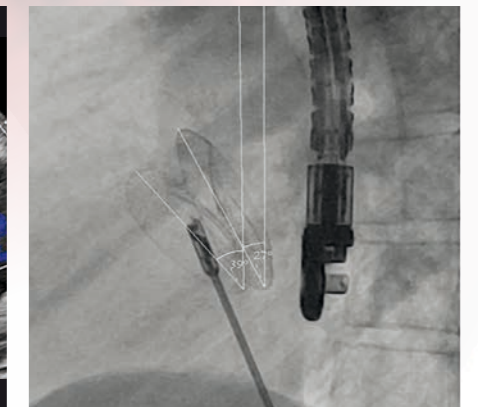
- Lower pull in forces and improved delivery sheath compatibility.
- Reduced material exposure.
- Significant reduced mean procedure and fluoroscopic time compared to other devices (34%).<sup>6</sup>



3D TEE image of an implanted Occlutech ASD Occluder.



Perfect alignment of the Occluder to the Septum.



50° angulation of Flex Pusher vs Occluder hub.