

# Occlutech UNI Occluder

Ordering information



Article No.	Ø Discs [mm]	Defect Size [mm]	Sheath Size* [F]	Flex Pusher II Article No. (colour**)
16UNI17	17/17	D≤8.4	7	51FP100 <span style="color: cyan;">●</span>
16UNI24	24/24	D≤11.9	9	51FP120 <span style="color: yellow;">●</span>
16UNI28	28.5/28.5	D≤13.9	9	51FP120 <span style="color: yellow;">●</span>
16UNI33	33/33	D≤16.4	11	51FP160 <span style="color: blue;">●</span>
16UNI40	40/40	D≤19.5	12	51FP160 <span style="color: blue;">●</span>

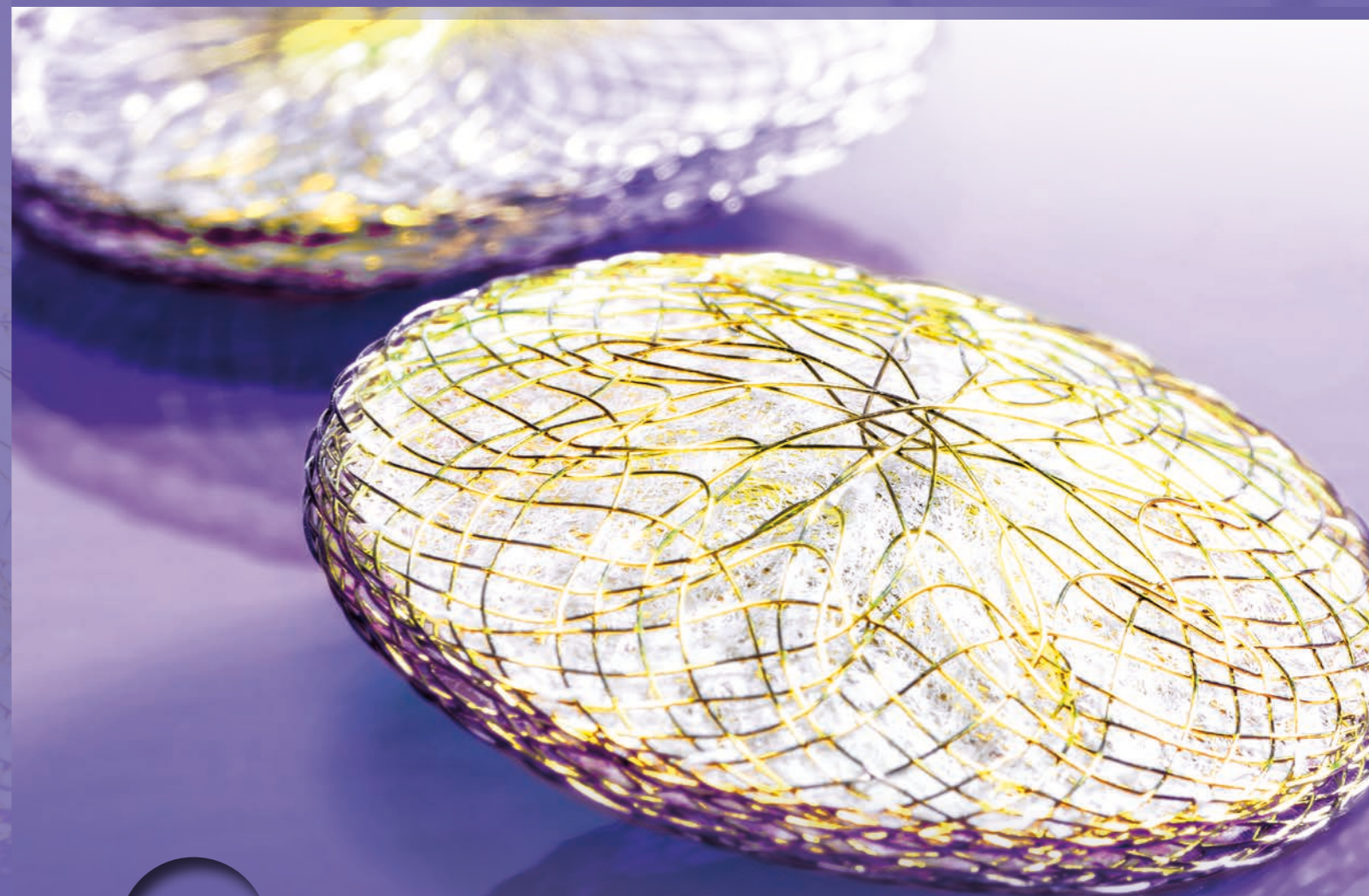
Availability subject to regulatory approval. Product data may be subject to change. Contact your Occlutech representative for information.

\* Occlutech Delivery Set (ODS).

\*\* Colour defines Pusher colour.



Occlutech Uniform Occluder



### Quality made in Europe

Occlutech adheres to the highest quality standards. We never compromise on quality. Our dedication to patients and the medical community is the main driver of our vision. We want to be in the forefront of developing technologies and products that matter, that make a difference and that will help our customers to be at the forefront when it comes to better treating structural heart disease.

Content references:

1. Castleman LS et al. Biocompatibility of Nitinol Alloys as an Implant Material. *Journal of Biomedical Materials Research* / 97 6; 10:695.

**Customer Service International**

Occlutech, La Cours Gata 2, SE-252 31 Helsingborg, Sweden  
 Tel +46 (0)704 33 65 32, Fax +46 (0)42 311 09 70  
 order@occlutech.com, [www.occlutech.com](http://www.occlutech.com)



# Designed for excellence and safety

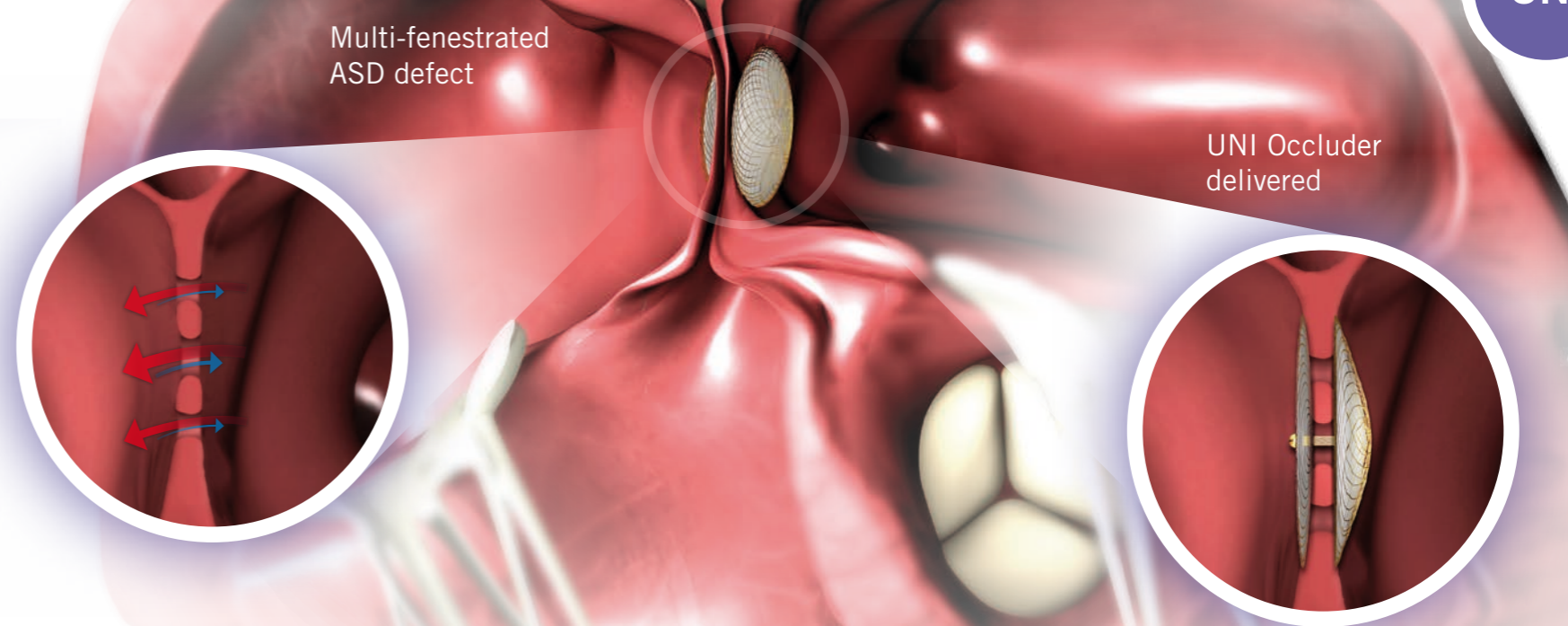
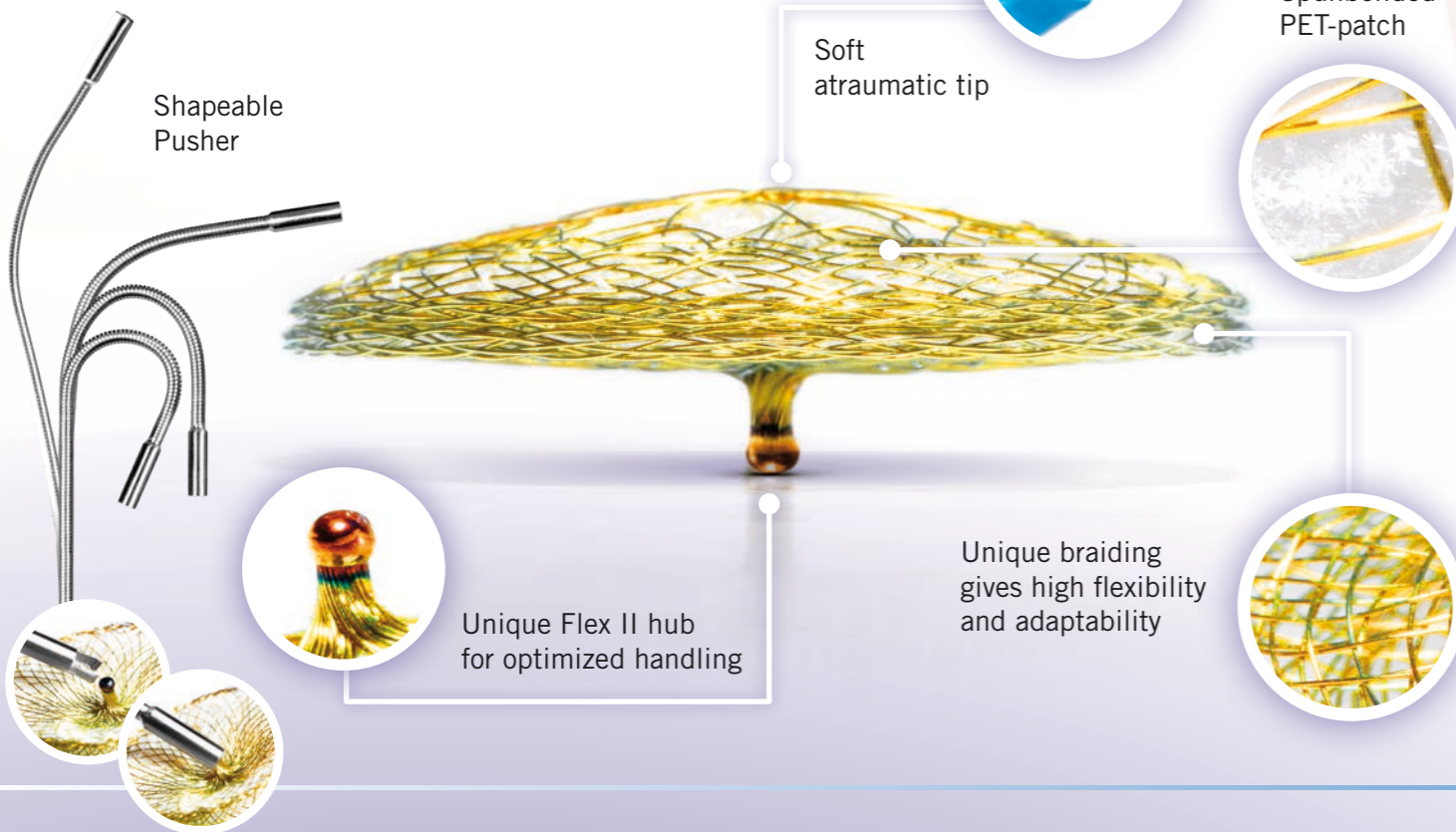


**PRODUCT FEATURES**

The Flex II UNI Occluder is specifically designed for closing multi-fenestrated atrial septal defects. Available in four versions with equally sized discs from 17 mm to 40 mm, it provides a wide range of choices

- Optimized braiding pattern and less material at left atrial disc.
- Spunbonded Polyester patch allows for fast endothelialization.
- Titanium oxide covered Nitinol shows the best values of biocompatibility.<sup>1</sup>
- The unique ball-connection safely locks the occluder, while allowing it to freely follow the anatomy without a distorting pull. Once in place it is easy and fast to deliver.

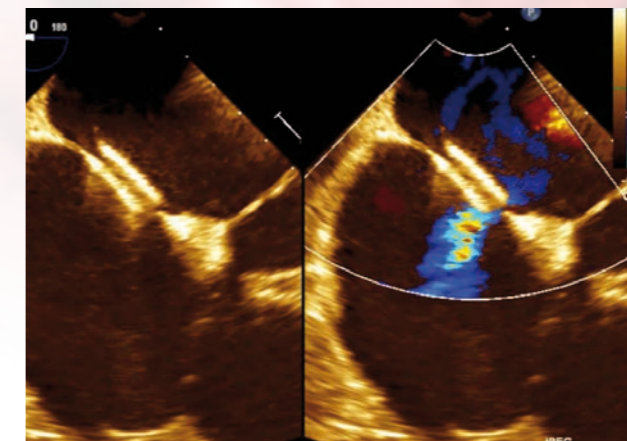
Excellent material and design characteristics



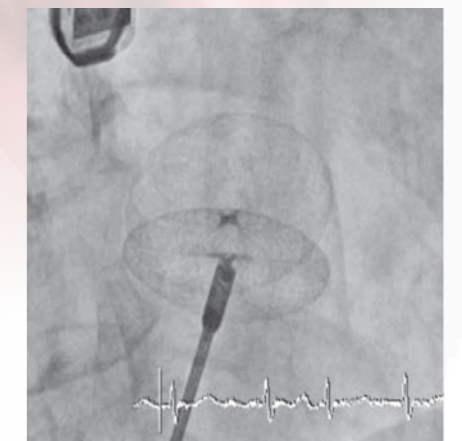
**CLINICAL BENEFITS**

The Flex II UNI Occluder represents an alternative to a surgical approach to close complex cases of multi-fenestrated ASDs

- The Flex II UNI Occluder is an optimal choice to close multi-fenestrated ASDs which usually require multiple devices.



Perfect alignment of the Occlutech Flex II UNI Occluder to the septum.



Flex II UNI Occluder under fluoroscopy.